



JAP100

Air Diaphragm Chuck



- ▲ Air cylinder intergrated, no rotary cylinder and draw bar required
- ▲ Repeatability within 5um
- ▲ Center through hole design, allow to set air blow or stopper in axis way
- ▲ Highly-sealed chuck body, helps protect cutting chips, dust or coolant fluid from entering
- ▲ Front-mount design make installation easy
- ▲ O.D/I.D clamping applies by only switch the jaw pad
- ▲ **Gentle and Precise clamping, best for fragile and thin-wall work piece**
- ▲ Please use 5um filter in F.R.L units

Introduction

JATO JAP100 Diaphragm chuck is putting effort in industry over 2 decades. Proudly design in our own structure and proof the ability with patens over Taiwan, China, Japan, German, and USA.

Diaphragm chuck is specialize to deal with the work piece as thin wall and fragile like aluminum and ceramic. Good performance in control the clamping force to prevent the object deformation.

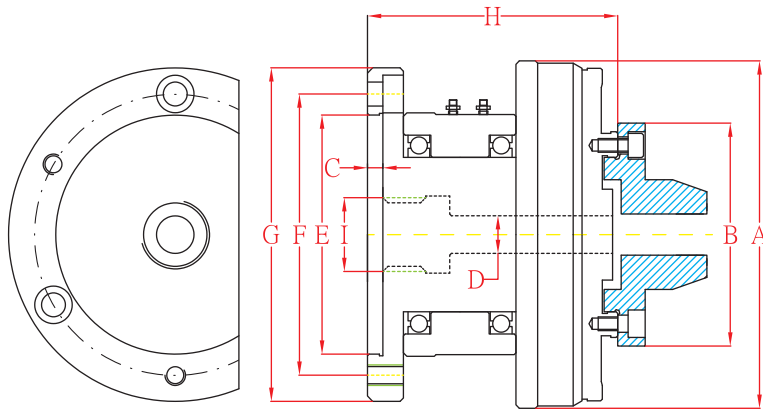
JAP100 is built in rotary cylinder, which is free to use the draw bar and rotary cylinder behind the spindle. Even makes it much easier to install on the non-through hole spin unit, like the 4/5 axis table or servo spindle. Manual chuck and special thin rotary cylinder won't be options when you have a rotary chuck. All you need is a flange adaptor and air feeding, imaging a simple installation without specialist worker and anyone with technical common sense, can get installation done easily when all components ready.

JAP100 Diaphragm chuck is involved in huge range in industry. We can go with testing machine, grinding machine, carving machine and all kinds of laser maching, and the product covered eletronic, medical, millitaty, optics and other clamping work requires concentricity and repeatability. High ends of run out is easy to reach.

Applications

- Spindle Grinding of DC Micro Motors
- Precise Bush
- Lens of Electronic Equipment
- Lens Frame of Smartphone
- Precision Sleeve
- Ceramics Grinding
- Cardiovascular stent
- Laser Carving, Laser Cutting, Laser Welding
- Case of Stylus

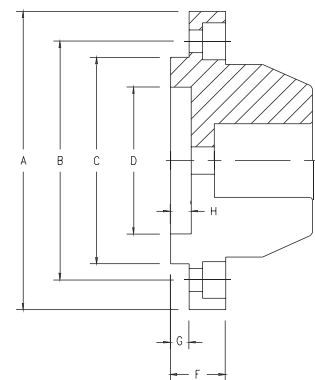
JAP100 Dimension and Specification



Model	JAP104	JAP105	JAP106
A	101 (3.98")	137 (5.37")	166 (6.54")
B	60 (2.36")	70 (2.76")	100 (3.94")
C	4.0 (0.16")	3.5 (0.14")	5.5 (0.22")
D	10 (0.39")	12 (0.47")	42 (1.65")
E	70 (2.76")	100 (3.94")	130 (5.12")
F (P. C. D.)	82 (3.23")	115 (4.53")	147 (5.79")
G	97 (3.82")	135 (5.31")	167 (6.57")
H	73 (2.87")	90 (3.54")	107 (4.21")
I	M21xP1.5	M25xP1.5	M60xP1.5
Mounting Bolts	4H-M6 (front)	3H-M8 (front)+ 3H-M8 (rear)	3H-M10 (front)+ 3H-M10 (rear)
Max. RPM	4000	3400	2400
Air Pressure	0.5-7kg/cm ² (7-100psi)	0.5-7kg/cm ² (7-100psi)	0.5-7kg/cm ² (7-100psi)
Jaw Opening	0.20mm (0.008")	0.20mm (0.008")	0.20mm (0.008")
Through Hole	10mm (0.39")	12mm (0.47")	42mm (1.65")
Net Weight	2.8kgs (6.2lbs)	6.0kgs (13.2lbs)	9.5kgs (20.9lbs)

JD Jaw Pad Dimensions

Model	A	B	C	D	F	G	H	Jaw Split	Chuck Model
JD-60	65mm (2.56")	52mm (2.05")	45mm (1.77")	32mm (1.26")	12mm (0.47")	4.0mm (0.16")	4.5mm (0.18")	6	JAP104
JD-70	75mm (2.95")	60mm (2.36")	50mm (1.97")	37mm (1.46")	14mm (0.55")	5.0mm (0.20")	5.0mm (0.20")	6	JAP105
JD-100	105mm (4.13")	90mm (3.54")	80.2mm (3.16")	65mm (2.56")	14mm (0.55")	5.5mm (0.22")	5.0mm (0.20")	8	JAP106



Customize Make Jaw Pad for JAP100 Series



5um Filter

Applies in all series of JAP100/JAP200, a set go along with packing.

