



JAP207-42BZI

Air Collet Chuck

for Hainbuch Style Collets

- ▲ Work with rubber collet
- ▲ Built-in rotary cylinder
- ▲ Parallel Clamp with over 1.5mm range
- ▲ Really fast collet change with wrench
- ▲ Import selected deep groove ball bearing, stable and tough
- ▲ Double piston, provide more clamping force
- ▲ High resistance to coolant fluid and cutting chips (Fluid and dust proof when air feeding in)

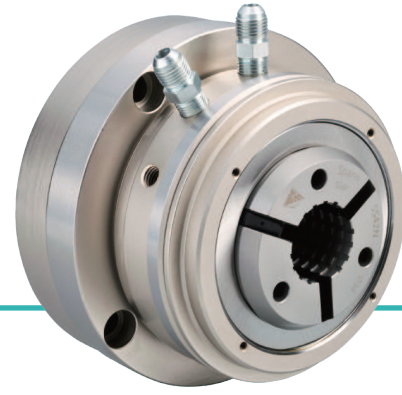


CHP206-SS42

Hydro Collet Chuck

for Rotary Tables/ Indexing Tables

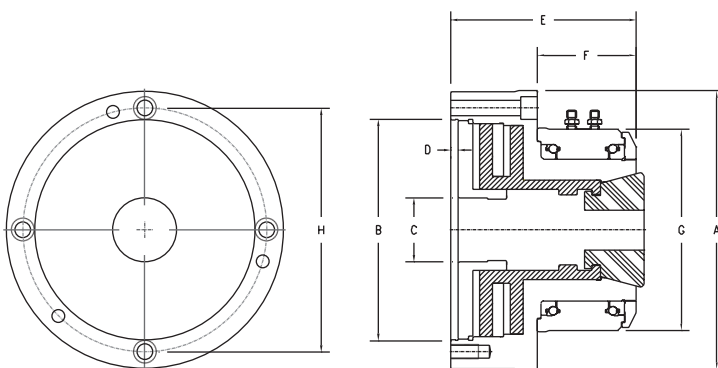
- ▲ Work with rubber collet
- ▲ Use Special O-ring from Trelleborg
- ▲ Parallel Clamp with over 1.5mm range
- ▲ Really fast collet change with wrench
- ▲ Hydro operated , powerful force with compact body



INTRODUCTION

In JAP200 series, BZI collet chuck is a unique existing. Combine with rotary cylinder and collet chuck, is setting free for those need an automatic feeding on 4 / 5 axis table.

There are two models for rotary rubber collet chuck. Jato Take double pistons to seek more pull force when input source is air, and for the same clamping force, Jato make efforts to downsize for the Hydro rubber collet chuck to fit the 6" rotary table. In rubber collet chuck, it make easy to change the collet, only by a change wrench, alter size can be done within 30 seconds.



Dimension and Specification

Model	JAP207-42BZI	CHP206-SS42
Air / Hydraulic	Air	Hydraulic
A	197 (7.75")	166 (6.54")
B	155 (6.10")	130 (5.12")
C	42 (1.65")	42 (1.65")
D	4.5 (0.18")	4.5 (0.18")
E	146 (5.75")	100 (3.94")
F	69 (2.72")	52 (2.05")
G	146 (5.75")	135(5.31")
H (P.C.D.)	172 (6.77")	147 (5.79")
Mounting Bolts	3H-M10 (front)+ 3H-M10 (rear)	4H-M10 (front)
Collet	SS42 Collet	SS42 Collet
Max. RPM	2500	100
Air Pressure	3-7kg/cm ² (40-100psi)	10-30kg/cm ² (143-500psi)
Max. Capacity	42mm (1.65")	42mm (1.65")
Piston Area	256cm ² (40.0in ²)	66cm ² (10.2in ²)
Gripping Force	5572kgf@7kg/cm ² (12258lbf@100psi)	5669kgf@30kg/cm ² (12472lbf@428psi)
Net Weight	20kgs (44lbs)	10kgs (22lbs)

JPCA

Pull Back Collet Chuck-Axial Stopper

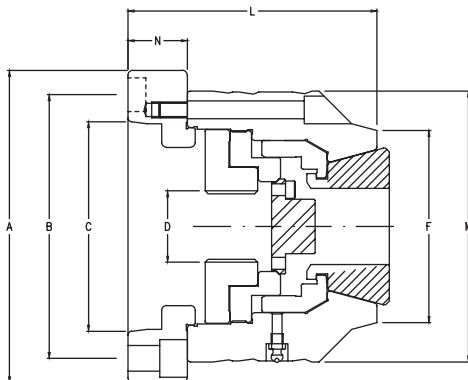


- ▲ Work with rubber collet
- ▲ Parallel Clamp with over 1.5mm range
- ▲ Really fast collet change with wrench
- ▲ Adjustable/Removable stopper, can alter to air blow, sensing device
- ▲ Capable to handle heavy duty work

Introduction

JPCA is a chuck with high-accuracy, heavy clamping force and rigid body. Whole chuck body is made of SUJ2 and harden to HRC60 provide the rigid body that capable to handle the heavy duty working. The parallel clamping promise to clamp the whole length regardless the tolerance of the work piece. Compare to the typical spring collet, rubber collet can be used more wide and stable. JPCA is designed with a stopper in the center, user can decide to use it with any require or take it off to come a through hole chuck.

Dimension and Specification



Rubber Collet



Collet Wrench



Model	JPCA-42A5	JPCA-42A6	JPCA-65A5	JPCA-65A6
Spindle Nose	A2-5	A2-6	A2-5	A2-6
A	138(5.43")	164(6.46")	138(5.43")	164(6.46")
B	104.8(4.13")	133.4(5.25")	104.8(4.13")	133.4(5.25")
C	82.6(3.25")	106.4(4.19")	82.6(3.25")	106.4(4.19")
D	M55	M55	M72	M72
F	97(3.82")	97(3.82")	119(4.69")	119(4.69")
L	123(4.84")	126(4.96")	138(5.43")	141(5.55")
M	137(5.39")	137(5.39")	164(6.46")	164(6.46")
N	27(1.06")	30(1.18")	27(1.06")	30(1.18")
Mounting Bolts	6H-M10	6H-M12	6H-M10	6H-M12
Collet	SS42 Collet (42BZI)	SS42 Collet (42BZI)	SS65 Collet (65BZI)	SS65 Collet (65BZI)
Collet Wrench	MV3200	MV3200	MV6500	MV6500
Axial Stroke	5.0mm(0.22")	5.0mm(0.22")	5.0mm(0.22")	5.0mm(0.22")
Clamping Range	±0.5mm(±0.02")	±0.5mm(±0.02")	±0.5mm(±0.02")	±0.5mm(±0.02")
Max. Capacity	42mm(1.65")	42mm(1.65")	65mm(2.56")	65mm(2.56")
Max.Axial Force	3200kgf(7040lbf)	3200kgf(7040lbf)	4000kgf(8800lbf)	4000kgf(8800lbf)
Gripping Force	7200kgf(15840lbf)	7200kgf(15840lbf)	7200kgf(20800lbf)	7200kgf(20800lbf)
Max. RPM	6500	6500	5500	5500
Net Weight	9.5kgs(20.9lbs)	10.5kgs(23.1lbs)	14.0kgs(30.8lbs)	15.0kgs(33.0lbs)