



## JAP200

### Air Collet Chuck

For Turning/Grinding or Index Tables

- ▶ Precision collet chuck with built-in rotary air cylinder.
- ▶ No need to install an extra cylinder, a draw tube or an air feeder.
- ▶ Works with standard 5C, 16C, DIN6343 B42, B60 or B80 collets.
- ▶ Through hole design for bar parts workholding.
- ▶ Self-lock design on close side offers high safety.
- ▶ High resistance to coolant fluid and chips penetration.
- ▶ Ideal for mounting onto 4axis/5axis rotary tables.



### JAP200 Air Collet Chuck

JATO JAP200 Cylinder Integrated Air Collet Chuck provides you with irreplaceable convenience to set up your power collet chuck system. With JATO's unique technology, JAP200 Collet Chuck integrates itself a high performance air rotary cylinder, saving you from installing an extra cylinder, tailor making any draw tube or any air feeders. With its real front-mounting design, the installation for a power collet chuck system is revolutionarily easier than ever.

JAP200 adopts dead length design, meaning that the workpiece's position will not be changed when in operation. JAP200 works with standard 5C collet, 16cCcollet, DIN6343 B42 (173E) collet, B60 (185E) collet, or B80 (193E) collet.

## CHP200

### Hydraulic Collet Chuck

Special for Index Tables

- ▶ Precision collet chuck with built-in rotary hydraulic actuator.
- ▶ Special for auto-workholding of index tables.
- ▶ No need to install an extra cylinder, a draw tube or an air feeder.
- ▶ Compact size. Large Clamping force.

### Applications

- ▶ Rotary table or index table power work-holding system.
- ▶ 4-axis or 5-axis work-holding on machine centers.
- ▶ NC-controlled index drilling or tapping.



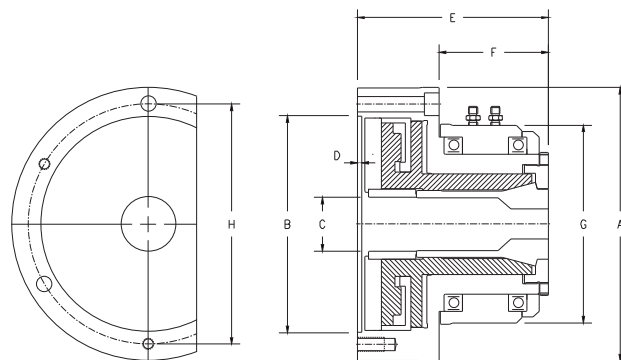
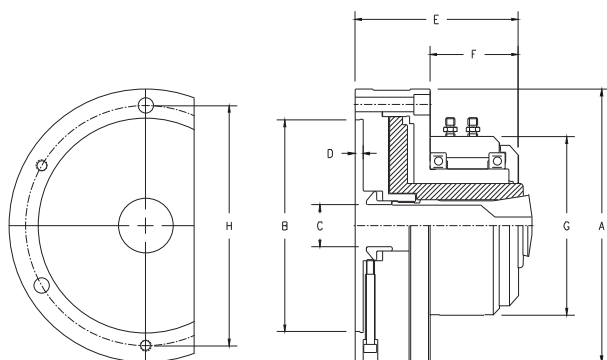
### CHP200 Hydraulic Collet Chuck

JATO CHP200 Cylinder Integrated Hydraulic Collet Chuck is specially designed to provide a hassle-free work-holding solution for rotary table applications. With built-in hydraulic actuator, CHP200 Collet Chuck can be front mounted onto a rotary table within minutes. CHP200 Collet Chuck also provides more available traveling space for your machine since CHP200 Collet Chuck has low profile design and no need for an additional rotary cylinder that may occupy space of your machine table.

# Cylinder-Integrated Collet Chuck

JAP206-5C/JAP207-16C/CHP206-SS42

JAP207-B42/JAP208-B60/JAP210-B80



## JAP200 Air Collet Chuck - Dimension/Specification

Model	JAP206-5C	JAP207-16C	JAP207-B42	JAP208-B60	JAP210-B80
A	168 (6.61")	197 (7.76")	196 (7.72")	207 (8.15")	248 (9.76")
B	130 (5.12")	160 (6.30")	155 (6.10")	170 (6.69")	200 (7.87")
C	26 (1.02")	40 (1.57")	42 (1.65")	60 (2.36")	80 (3.15")
D	4.5 (0.18")	4.5 (0.18")	4.5 (0.18")	4.5 (0.18")	5.5 (0.22")
E	100 (3.94")	112 (4.41")	138 (5.43")	148 (5.83")	187 (7.36")
F	55 (2.17")	64 (2.52")	77 (3.03")	86 (3.39")	82 (3.24")
G	110 (4.33")	130 (5.12")	144 (5.67")	168 (6.61")	207 (8.15")
H (P.C.D.)	147 (5.79")	176 (6.93")	172 (6.77")	186 (7.32")	227 (8.94")
Mounting Screws	4H-M8(front-mount)	3H-M10(front-mount) + 3H-M10(rear-mount)	3H-M10(front-mount) + 3H-M10(rear-mount)	3H-M10(front-mount) + 3H-M10(rear-mount)	6H-M10(front-mount)
Working Collet	5C Collet	16C Collet	B42 Collet (DIN6343 173E)	B60 Collet (DIN6343 185E)	B80 Collet (DIN6343 193E)
Max. RPM	3600	2800	2500	2000	1500
Operating Pressure	3-8kg/cm2 (43-114psi)	3-8kg/cm2 (43-114psi)	3-8kg/cm2 (43-114psi)	3-8kg/cm2 (43-114psi)	3-8kg/cm2 (43-114psi)
Max. Capacity	26mm (1.02")	40mm (1.57")	42mm (1.65")	60mm (2.36")	80mm (3.15")
Piston Area	130cm2 (20.2in2)	155cm2 (24.0in2)	278cm2 (43.1in2)	304cm2 (47.2in2)	427cm2 (66.2in2)
Clamping Force	3465kgf@7kg/cm2 (7623lbf@100psi)	4078kgf@7kg/cm2 (8971lbf@100psi)	5572kgf@7kg/cm2 (12258lbf@100psi)	6072kgf@7kg/cm2 (13358lbf@100psi)	8440kgf@7kg/cm2 (18568lbf@100psi)
Net Weight	10kgs (22lbs)	14kgs (31lbs)	17kgs (37lbs)	21kgs (46lbs)	32kgs (71lbs)

## CHP200 Hydraulic Collet Chuck - Dimension/Specification

Model	CHP206-SS42
A	166 (6.53")
B	130 (5.12")
C	42 (1.65")
D	4.5 (0.18")
E	100 (3.94")
F	52 (2.05")
G	135 (2.32")
H (P.C.D.)	147 (5.79")
Mounting Screws	4H-M8 (front-mount)
Working Collet	SZM SS42 Collet
Max. RPM	150 (intermittent)
Operating Pressure	10-40kg/cm2 (143-572psi)
Max. Capacity	42mm (1.65")
Piston Area	66cm2 (10.2in2)
Clamping Force	4515kgf@30kg/cm2 (9933lbf@429psi)
Net Weight	T.B.D.