



CPD

Dead-Length Collet Chuck - 5C/16C

- 5C and 16C dead length collet chuck.
- Push to close power collet chuck, the work-part has no axial movement.
- Direct mounting to spindle nose in A2 or in Flat-Back.
- Chucking accuracy 0.030mm (regular spring collet).
- Chucking accuracy 0.020mm (selected precision spring collet).



Dimension/Specification

Fig. 1 A2 Type Flange

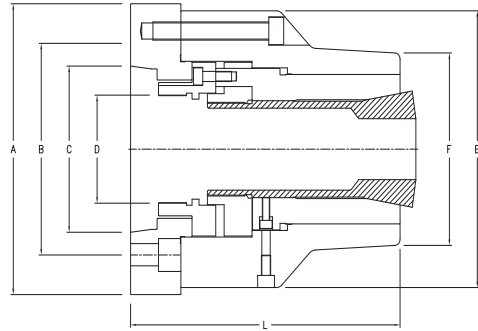
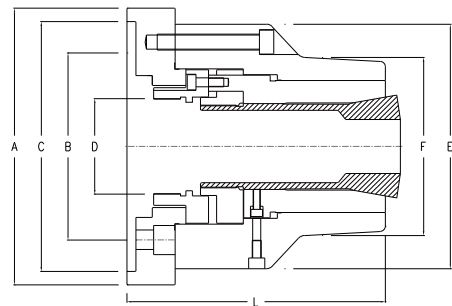


Fig. 2 Flat Back Flange

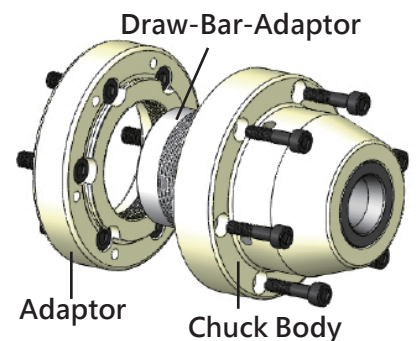


CPD Power Collet Chuck - A2 Type Flange (Fig.1)

Model	CPD-5CA4	CPD-5CA5	CPD-5CA6	CPD-16CA5	CPD-16CA6	CPD-16CA8
Spindle Nose	A2-4	A2-5	A2-6	A2-5	A2-6	A2-8
A	137 (5.39")	137 (5.39")	158 (6.22")	137 (5.39")	158 (6.22")	218 (8.58")
B (P.C.D.)	82.6 (3.25")	104.8 (4.13")	133.4 (5.25")	104.8 (4.13")	133.4 (5.25")	171.4 (6.75")
C	63.5 (2.50")	82.6 (3.25")	106.4 (4.19")	82.6 (3.25")	106.4 (4.19")	139.7 (5.50")
D	M73 x P1.5	M73 x P1.5	M73 x P1.5	M91 x P1.5	M91 x P1.5	M91 x P1.5
E	137 (5.39")	137 (5.39")	137 (5.39")	137 (5.39")	137 (5.39")	137 (5.39")
F	100 (3.94")	100 (3.94")	100 (3.94")	100 (3.94")	100 (3.94")	100 (3.94")
L	116 (4.57")	122 (4.80")	125 (4.92")	145 (5.71")	145 (5.71")	160 (5.71")
Mount Screw	6H-M10	6H-M10	6H-M12	6H-M10	6H-M12	6H-M16
Working Collet	5C Collet (Max. 26mm)	5C Collet (Max. 26mm)	5C Collet (Max. 26mm)	16C Collet (Max. 40mm)	16C Collet (Max. 40mm)	16C Collet (Max. 40mm)
Max. Draw Bar Force	1800kgf (3900lbf)	1800kgf (3900lbf)	1800kgf (3900lbf)	2300kgf (5060lbf)	2300kgf (5060lbf)	2300kgf (5060lbf)
Max. RPM	6000	6000	6000	5000	5000	5000
Weight	8.0kgs (17.6lbs)	8.0kgs (17.6lbs)	9.0kgs (19.8lbs)	10.0kgs (22lbs)	12.0kgs (26.4lbs)	18.0kgs (39.6lbs)

CPD Power Collet Chuck - Flat Back Flange (Fig.2)

Model	CPD-5CZ110	CPD-5CZ140	CPD-16CZ110	CPD-16CZ140
Spindle Nose	Z110mm	Z140mm	Z110mm	Z140mm
A	147 (5.79")	168 (6.62")	147 (5.79")	168 (6.62")
B (P.C.D.)	82.6 (3.25")	104.8 (4.13")	82.6 (3.25")	104.8 (4.13")
C	110 (4.33")	140 (5.51")	110 (4.33")	140 (5.51")
D	M73 x P1.5	M73 x P1.5	M91 x P1.5	M91 x P1.5
E	137 (5.39")	137 (5.39")	137 (5.39")	137 (5.39")
F	100 (3.94")	100 (3.94")	100 (3.94")	100 (3.94")
L	122 (4.80")	122 (4.80")	145 (5.71")	145 (5.71")
Mount Screw	6H-M10	6H-M10	6H-M10	6H-M10
Working Collet	5C Collet (Max. 26mm)	5C Collet (Max. 26mm)	16C Collet (Max. 40mm)	16C Collet (Max. 40mm)
Max. Draw Bar Force	1800kgf (3900lbf)	1800kgf (3900lbf)	2300kgf (5060lbf)	2300kgf (5060lbf)
Max. RPM	6000	6000	5000	5000
Weight	8.5kgs (18.7lbs)	9.0kgs (19.8lbs)	10.0kgs (22lbs)	12.0kgs (26.4lbs)



There is a blank Draw-Bar-Adaptor shipped with CPD Chuck. Thread the nut according to your draw bar dimension then install it onto the chuck body before install the whole chuck body onto the spindle.

Precision Collet Chuck

CPB

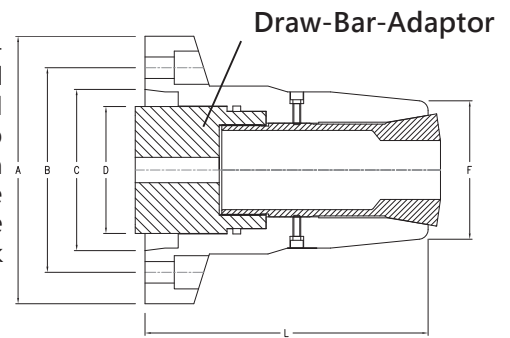
Pull Back Collet Chuck - 5C/16C

- 5C and 16C pull back collet chuck.
- Pull to close power collet chuck, high chucking accuracy.
- Direct mounting to spindle nose in A2 flange.
- Accurate chuck body: 0.010mm



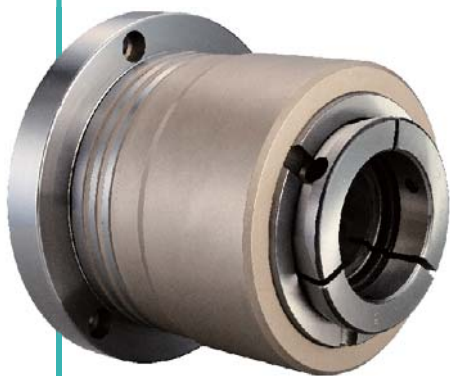
CPB Collet Chuck Dimension/Specification

There is a blank Draw-Bar-Adaptor shipped with CPB Chuck. Thread the nut according to your draw bar dimension then install it onto the chuck body before install the whole chuck onto the spindle.



Model	CPB-5CA5	CPB-5CA6	CPB-16CA5	CPB-16CA6
Spindle Nose	A2-5	A2-6	A2-5	A2-6
A	137 (5.39")	166 (6.54")	137 (5.39")	166 (6.54")
B (P.C.D)	104.8 (4.13")	133.4 (5.25")	104.8 (4.13")	133.4 (5.25")
C	82.6 (3.25")	106.4 (4.19")	82.6 (3.25")	106.4 (4.19")
D	Max. M58	Max. M65	Max. M58	Max. M65
F	60 (2.36")	60 (2.36")	80 (3.15")	80 (3.15")
L	122 (4.80")	122 (4.80")	145 (5.71")	145 (5.71")
Mount Screw	3H-M10	3H-M12	6H-M10	6H-M12
Working Collet	5C Collet	5C Collet	16C Collet	16C Collet
Max. Draw Bar Force	1800kgf (3900lbf)	1800kgf (3900lbf)	2300kgf (5060lbf)	2300kgf (5060lbf)
Max. RPM	6000	6000	5000	5000
Weight	5.0kgs (11.0lbs)	7.5kgs (16.5lbs)	5.5kgs (12.1lbs)	10.0kgs (22.0lbs)

CPD-C50Z140 Power Collet Chuck



- Adopts C-50 jaw.
- Max. capacity 50mm.
- Dead length design.
- Suitable for heavy duty machining.
- Max. 5000RPM
- Chuck weight 19.0kgs

