

Rotary Power Chuck

JA5-25C Rotary Power Chuck JA7-40C Rotary Power Chuck

Brand New Upgraded Model for JA5-25 and JA7-40



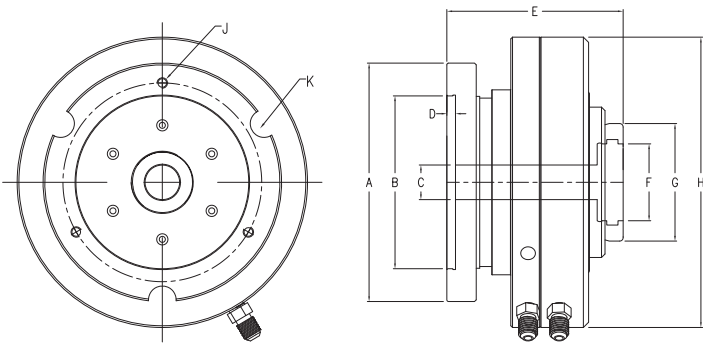
Features

- Air cylinder is built-in. No need for extra cylinders.
- Easy for installation.
- Chuck is with through hole for bar parts auto loading.
- Allows non-stop operation when loading parts (<1000RPM).
- Widely applied to convert manual lathe into powered ones.
- Widely applied to build special purpose machines.

Upgraded New Features

- JA5-25C max. speed is raised to 2700RPM
- JA7-40C max. speed is raised to 2200RPM
- Chuck force opening mechanism.
- Cutting fluid proof. Dust proof.
- High chucking accuracy < 0.020mm.
- Chuck is with front-mounting screw holes.

JA5-25C/JA7-40C Dimension/Specification



Model	JA5-25C (Air) (*2012Q1)	JA7-40C (Air) (*2012Q3)
A	138 (5.43")	195 (7.68")
B	100 (3.94")	155 (6.10")
C	26 (1.02")	46 (1.81")
D	5 (0.20")	5 (0.20")
E	102 (4.02")	123 (4.84")
F	45 (1.77")	65 (2.56")
G	68 (2.68")	94 (3.70")
H	168 (6.61")	200 (7.87")
I (P.C.D) (Rear)	115 (4.53") 3H-M8xP1.25	172 (6.77") 3H-M10xP1.5
K (P.C.D) (Front)	123 (4.84") 3H-M8xP1.25	172 (6.77") 3H-M10xP1.5
Working Jaw	C-25 Jaw	C-40 Jaw
Air / Hydro	Air	Air
Operating Pressure	2-9kg/cm ² (28-130psi)	2-9kg/cm ² (28-130psi)
Max. RPM	2700	2200
Capacity	25mm(0.98")	45mm (1.77")
Piston Area	127cm ² (19.7in ²)	177cm ² (27.4in ²)
Grip Force	2960kgf@7kg/cm ² (6512lbf@100psi)	4140kgf@7kg/cm ² (9110lbf@100psi)
Weight	10.0kgs (22.0lbs)	16.0kgs (35.2lbs)