



## JAP200

### Cylinder-Integrated Air Collet Chuck

Precision collet chuck with built-in air cylinder.

No need to install an extra cylinder, a draw tube or an air feeder.

Work-part chucking repeatability up to 0.025mm.

Works with standard 5C, 16C, B42, B60 or B80 collets.

High speed up to 5000RPM (JAP206-5C).

Large through hole up to 80mm (JAP210-B80).

Self-lock design on close side offers high safety.

High resistance to coolant fluid and chips penetration.



### JAP200 Introduction

JATO JAP200 Cylinder Integrated Air Collet Chuck provides you with irreplaceable convenience to set up your power collet chuck system. With JATO's unique technology, JAP200 Collet Chuck integrates itself a high performance air cylinder, saving you from installing an extra cylinder, tailor making any draw tube or any air feeders. With its real front-mounting design, the installation for a power collet chuck system is revolutionarily easier than ever.

## CHP200

### Cylinder-Integrated Hydraulic Collet Chuck

Precision collet chuck with built-in hydraulic cylinder.

No need to install an extra cylinder or a draw tube.

High resistance to coolant fluid and chips penetration.

Compact size. Large clamping force.

### Applications

Rotary table power work-holding system.

Gear hobbing, skiving, and shaping.

4-axis/5-axis work-holding on machine centers.

NC-controlled index drilling or tapping.



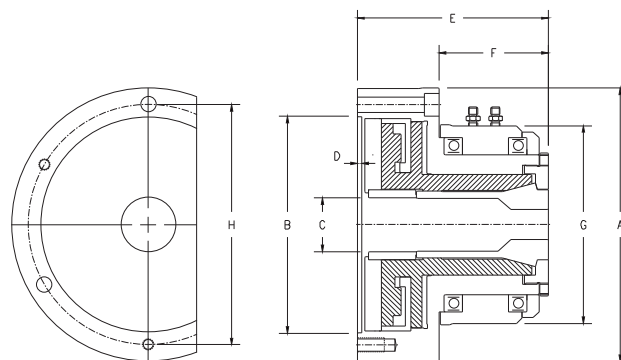
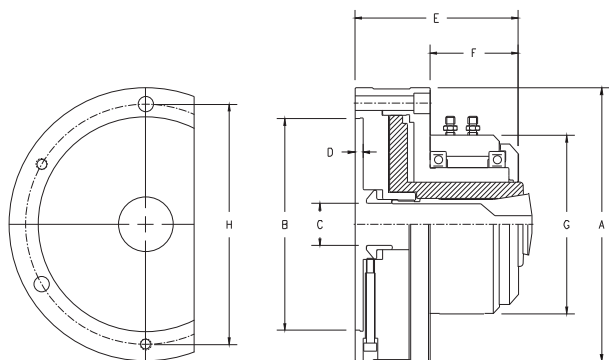
### CHP200 Introduction

JATO CHP200 Cylinder Integrated Hydraulic Collet Chuck is specially designed to provide a hassle-free work-holding solution for rotary table applications. With built-in hydraulic actuator, CHP200 Collet Chuck can be front mounted onto a rotary table within minutes. CHP200 is resistant to cutting fluid and cutting chips, now is widely applied as machine centers' 4-axis or 5-axis work-holding system. It can also be installed onto NC tapping center for index drilling or tapping applications.

# Cylinder-Integrated Collet Chuck

JAP206-5C/JAP207-16C  
CHP206-5C/CHP206-25

JAP207-B42/JAP208-B60/JAP210-B80



## JAP200 Dimensions/Specifications

| Model               | JAP206-5C  | JAP207-16C                                       | JAP207-B42                                       | JAP208-B60                                       | JAP210-B80                                       |
|---------------------|--|--|--|--|--|
| A                   | 168 (6.61")                                      | 197 (7.76")                                      | 196 (7.72")                                      | 207 (8.15")                                      | 246 (9.67")                                      |
| B                   | 130 (5.12")                                      | 160 (6.30")                                      | 155 (6.10")                                      | 170 (6.69")                                      | 200 (7.87")                                      |
| C                   | 26 (1.02")                                       | 40 (1.57")                                       | 42 (1.65")                                       | 60 (2.36")                                       | 80 (3.15")                                       |
| D                   | 5 (0.20")  | 5 (0.20")  | 5 (0.20")  | 5 (0.20")  | 5 (0.20")  |
| E                   | 100 (3.94")                                      | 112 (4.41")                                      | 138 (5.43")                                      | 148 (5.83")                                      | 152 (5.98")                                      |
| F                   | 55 (2.17")                                       | 64 (2.52")                                       | 77 (3.03")                                       | 86 (3.39")                                       | 80 (3.15")                                       |
| G                   | 110 (4.33")                                      | 130 (5.12")                                      | 144 (5.67")                                      | 168 (6.61")                                      | 196 (7.72")                                      |
| H                   | 147 (5.79")                                      | 176 (6.93")                                      | 172 (6.77")                                      | 186 (7.32")                                      | 226 (8.90")                                      |
| Mounting Screw Hole | 9.0x4  | 11.0x3<br>M10xP1.5x3                             | 11.0x3<br>M10xP1.5x3                             | 11.0x3<br>M10xP1.5x3                             | 11.0x6   |
| Working Collet      | 5C筒夾   | 16C筒夾  | B42筒夾 (173E)                                     | B60筒夾 (185E)                                     | B80筒夾 (193E)                                     |
| Max. RPM            | 5000   | 4000   | 3600   | 3000   | 2300   |
| Operating Pressure  | 3-8kg/cm <sup>2</sup><br>(43-114psi)             | 3-8kg/cm <sup>2</sup><br>(43-114psi)             | 3-8kg/cm <sup>2</sup><br>(43-114psi)             | 3-8kg/cm <sup>2</sup><br>(43-114psi)             | 3-8kg/cm <sup>2</sup><br>(43-114psi)             |
| Chuck Through Hole  | 26mm (1.02")                                     | 40mm (1.57")                                     | 42mm (1.65")                                     | 60mm (2.36")                                     | 80mm (3.15")                                     |
| Clamping Force      | 4825kgf@7kg/cm <sup>2</sup><br>(10615lbf@100psi) | 5600kgf@7kg/cm <sup>2</sup><br>(12320lbf@100psi) | 5960kgf@7kg/cm <sup>2</sup><br>(13112lbf@100psi) | 7250kgf@7kg/cm <sup>2</sup><br>(15950lbf@100psi) | 9060kgf@7kg/cm <sup>2</sup><br>(19932lbf@100psi) |
| Net Weight          | 10kgs (22lbs)                                    | 14kgs (31lbs)                                    | 17kgs (37lbs)                                    | 21kgs (46lbs)                                    | 32kgs (71lbs)                                    |

## CHP200 Dimensions/Specifications

| Model               | CHP206-5C   | CHP206-25   |
|---------------------|---|---|
| A                   | 168 (6.61")                                       | 168 (6.61")                                       |
| B                   | 130 (5.12")                                       | 130 (5.12")                                       |
| C                   | 26 (1.02")  | 26 (1.02")  |
| D                   | 5 (0.20")   | 5 (0.20")   |
| E                   | 100 (3.94")                                       | 100 (3.94")                                       |
| F                   | 55 (2.17")  | 55 (2.17")  |
| G                   | 110 (4.33")                                       | 110 (4.33")                                       |
| H                   | 147 (5.79")                                       | 147 (5.79")                                       |
| Mounting Screw Hole | 9.0x4   | 9.0x4   |
| Working Collet      | 5C筒夾  | YB-25筒夾   |
| Max. RPM            | 150   | 150   |
| Operating Pressure  | 3-15kg/cm <sup>2</sup> (43-215psi)                | 3-15kg/cm <sup>2</sup> (43-215psi)                |
| Chuck Through Hole  | 26mm (1.02")                                      | 26mm (1.02")                                      |
| Clamping Force      | 9700kgf@15kg/cm <sup>2</sup><br>(21340lbf@215psi) | 9700kgf@15kg/cm <sup>2</sup><br>(21340lbf@215psi) |
| Net Weight          | 10kgs (22lbs)                                     | 10kgs (22lbs)                                     |